



# Reviving Community Living



Quaid Doongerwala



Shilpa Ranad

**Project:** Sublime Ordinairiness, Vasind, Maharashtra  
**Architects:** DCOOP, Mumbai

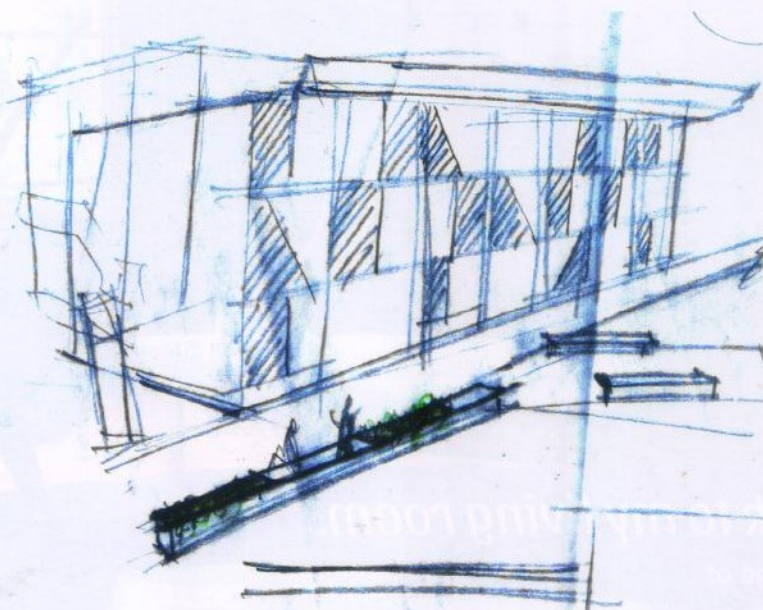
The housing project is located about 60 km to the north east of Mumbai and houses 54 families of staff working in the industrial facility of a colour coating plant for a large corporate group.

Family, relatives and community play a critical role in the Indian society – the housing has been designed keeping these socio-cultural realities in mind.

Using the Mumbai chawl as a reference to organize the spaces, we saw it as a typology with tremendous possibility of being a social catalyst. Four apartments of 540sq ft each are strung along a corridor space, at the end of which sits the staircase. On the ground floor, the apartments are accessible individually, having their own small semi-private space, resembling the characteristic



SECTION



“otla” (raised entrance level plinth) seen in the traditional houses of India (*pols*, *wadas* etc). Three blocks come together along with the semi-round monolithic block to form this large central community space into which all the corridors open.

The form of each staircase is carefully articulated to give each block a little twist and hereby giving each an identity of its own. The construction system is a very simple brick and concrete system using locally available artisans. The structural system is carefully calibrated to produce a façade which helps to scale the building to a more humane level.

The idea of the community and living together has been a key intent of this project. Corridors, staircases,

balconies and “otlas” opening into a larger public space create a rejuvenated community spirit and reinforce a sense of belonging and togetherness for people living in industrial facilities. +

### Factfile

**Client:** JSW Steel Coated Product Ltd.

**Design Team:** Quaid Doongerwala, Shilpa Ranade, Parin Visariya, Nikita Baliga, Kavana Kumar, Prakool Soni, Suresh Sawant.

**Consultants:** Asim Shah (structural), URJA (electrical and plumbing)

**Contractors:** Ellora Buildcon

**Built-up area:** 3900sq m

**Year of completion:** 2016

