

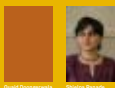
MUMBAI

'The origins of Mumbai city can be traced back to an archipelago of seven islands on India's western coast. With a geographical spread of just 438 sq. kms, and a population of 14 million by conservative estimates, Mumbai has some of the densest spaces in the world (...) and stands at a critical juncture. It could fight for its legacy of inclusiveness, and evolve a new paradigm for a modernized Indian city that retains its complex richness, or purge its identity into that of yet another anonymous, sanitized, global megalopolis.'

i.1 Introduction



i.2 The architect: DCOOP



Gauri Dongerwala



Shilpa Ratode



MUMBAI

'Spread over 500 acres and housing between half a million to one million people, Dharavi is one of the most densely populated spaces in the world. Although tagged with the label of being 'the largest slum in Asia', it is in fact a conglomeration of distinct organically evolved neighbourhoods and a bustling hub of informal economic activity. Its lack of legal land ownership has meant that the infrastructural facilities have been meagre and there lies the primary cause for its dereliction.'

p.1 Project 1: In the city of Shanghai Dreams

p.1.1 Dharavi

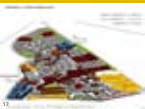
Situation



Proposal by M M Project Consultants



Proposal by the Kamla Raheja Vidyaneedhi Institute of Architecture (KRVI), a critique of the plan above



p.1.2 Mill-lands

'Occupying over 400 acres, the cotton textile mills were once thriving hubs of manufacturing activity supporting thousands in the city. (...) A majority of this land has been sold to private developers and its sturdy old heritage value structures are rapidly being replaced by exclusive colonies - the city receiving very little in the deal.'



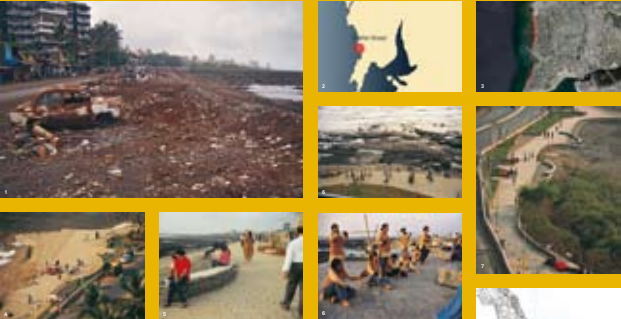
MUMBAI

'Unplanned private developments, unauthorized encroachments, garbage dumping, and otherwise poor maintenance of the water edge have consistently reduced the visual and physical access to the sea. This loss of public access is only symptomatic of a larger endemic problem in Mumbai – the gross scarcity of public space which has only been exacerbated by a warped policy level vision for the city.'

p.2 Once upon a time there was a City by the Sea

p.2.1 Carter Road, Bandra

Old and new situation



Plan by architect P.K. Das and the Bandra Residents association, year??



p.2.2 The Eastern Water front

Situation



Study by the Urban Design Research Institute (UDRI) with the Kamla Raheja Vidyaneedhi Institute of Architecture (KRVI) to understand the potential of this land.



MUMBAI

'As in most Indian cities, a parallel world of informal businesses flourishes in Mumbai in the interstices between the formal structures and the flow of the roads. The 'architecture' of this street market emerges out of responses to multiple needs; displaying goods, attracting buyers, negotiating the legality of the shops, the security of the goods (...). In Mumbai, where space is at a premium, the characteristic features of street shops emerge from acts of maximizing the minimal space available in creative ways.'

p.3

Betwixt and between – the Liminal City

Shop Boxes, Dadar



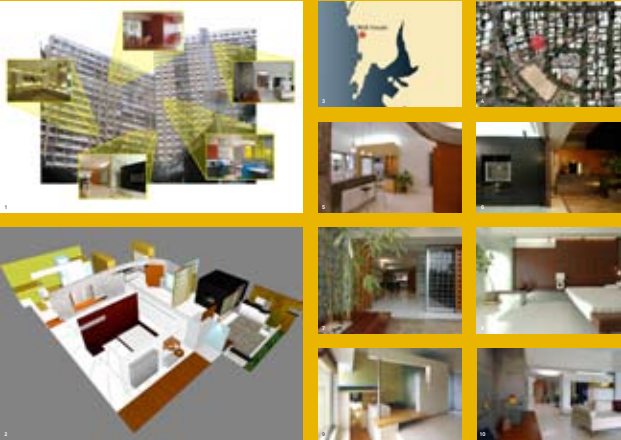
MUMBAI

'In a city which is becoming increasingly impersonal, its people resist pigeon-holing with a vengeance, finding ways to express their individuality – with the help of an interior designer when they can afford it. In a construction context dominated by developers, the thriving interior design culture of the city offers a viable creative space for practices outside this paradigm and young architects looking for their first breaks (...).'

p.4 And then they made their own Cities Within

p.4.1 Wall House

Wall House, Shilpa and Pinkesh Shah, year??



p.4.2 Office for Indigo

Office design, DCOOP, year??



MUMBAI

'Mumbai lacks the clean air and green spaces for a moment of respite. There are some then who have a weekend home, sitting independently and surrounded by green in the small villages and towns across the bay near Alibaug (...).These weekend houses are critical in that here we find a distinct and robust body of work that builds on the 'romantic' tradition in Indian architecture – one that acknowledges the fundamentals of building in a tropical context with its particular climate, landscapes, materials and building traditions.'

p.5 Mumbai Escape

p.5.1 House for a Filmmaker

Design: Rahul Mehrotra Associates, year??



p.5.2 Office for Indigo

Design: Samira Rathod, year??

